



JUST A SHORT WALK TO:

- CARMINE'S ON PENN
- THE SPOT
- CAFÉ EUROPA
- PABLO'S COFFEE
- GOVERNOR'S PARK
- RACINE'S
- ESQUIRE THEATER
- IRISH ROVER
- COREPOWER YOGA

SURROUNDED BY PARKS!
WASH PARK
HUNGARIAN FREEDOM
AND ALAMO PLACITA

EASY ACCESS TO GROCERIES,
SHOPPING, & SERVICES
1 MINUTE TO CHERRY CREEK
BIKE PATH TONS OF RESTAURANTS!



LIZ RICHARDS

BROKER ASSOCIATE

MOBILE 303.956.2962

DIRECT 303.785.3544

LRICHARDS@KENTWOODCITY.COM



200 Pearl Street #405

Fabulous Penthouse Unit with Private Balcony



EXCLUSIVELY
MARKETED BY:
Liz Richards

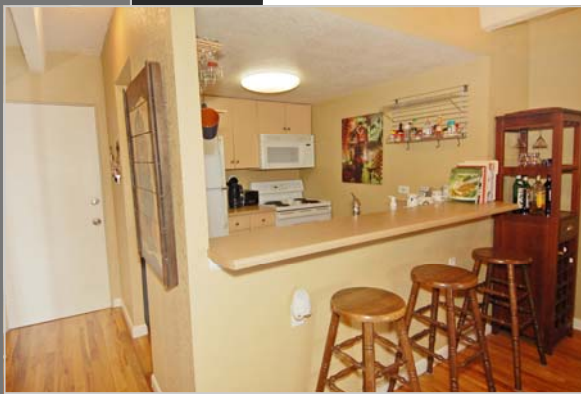


Wash Park

OFFERED AT: \$135,000

overview of the home

Area: Wash Park
Construction: Brick
Year: 1961
Bedrooms: One
Baths: One
Total Sq Ft: 634
HOA: \$241/Month
HOA Includes: Community Pool, Snow Removal, Ext. Building w/ Roof, Trash, Grounds & Heat
Heat: Steam Boiler
Taxes: \$670
Earnest Money: Kentwood City Properties
Exclusions: Furniture & Art



Stunning Penthouse with Lots of Updates!

- SOUTH FACING UNIT WITH SPACIOUS PRIVATE BALCONY
- HARDWOOD FLOORS
- UPDATED WITH LOADS OF CHARM
- STRONG HOA
- RESERVED PARKING
- COMMUNITY POOL
- CENTRAL LOCATION, WALK TO EVERYTHING!
- SECURE & WELL RUN BUILDING!



view this property online at:

www.LizRichardsRealEstate.com